

**CIVILIAN CONSERVATION CORPS:
THEIR LEGACY AT LEE**

The Beginning: The Civilian Conservation Corps (CCC) was created by President Roosevelt during the first 100 days of his Presidency in 1933. One goal of the CCC was to enroll young unemployed men and teach them work skills like plumbing and road construction while helping to build many state and national parks. In return, the enrollees received room, board, uniforms and a paycheck. Some of the enrollees pay was automatically sent home to help support their families.

With the help of Senator R.E. Dennis, a Civilian Conservation Corps Camp for Lee County was approved by the Federal Government in early 1935. Their main task was to build a state park on the east bank of the Lynches River.

During June 1935, a small group of CCC enrollees arrived in Lee County to construct the Camp where 200 CCC enrollees would live while building Lee State Park.



The entrance sign, made by the CCC, marked the entrance to the CCC Camp, Company 4471 P-88.

(photo courtesy of B.R. Caldwell)



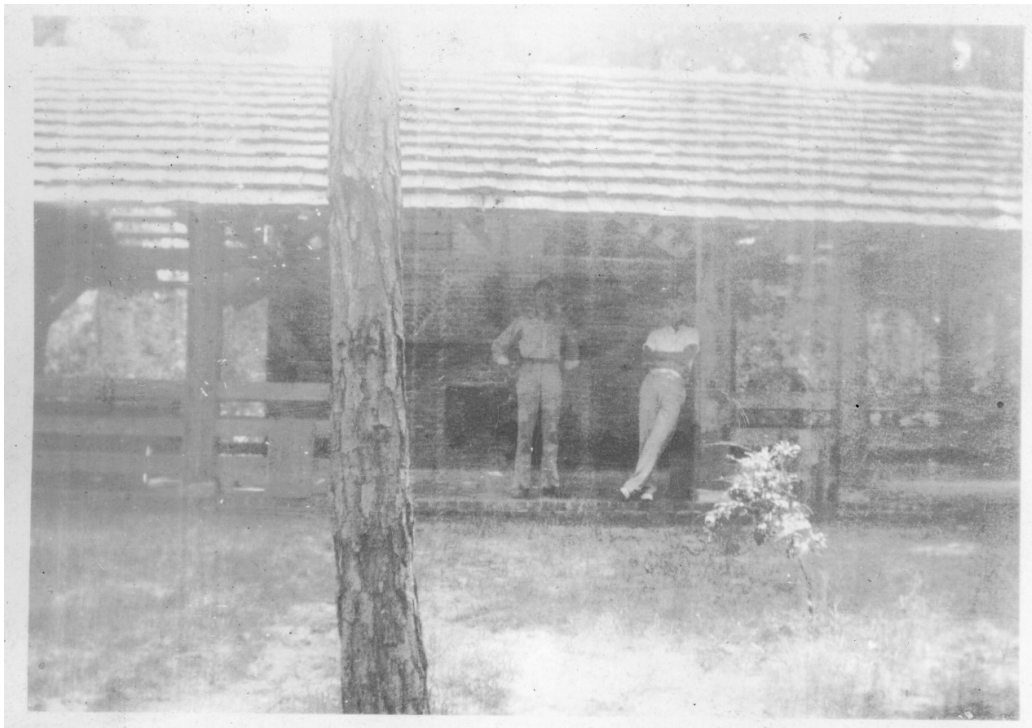
CCC enrollees in camp.
(photo courtesy of B.R. Caldwell)

1936 & 1937: During the early years, the CCC worked on cleaning up the lake and building fish rearing pools.



CCC constructing fish rearing pools.
(photo courtesy of National Archives, Atlanta, Georgia)

They also built shelter #1, Loop Road and a few artesian wells.



CCC enrollees on a day off enjoying the picnic shelter they built.
(photo courtesy of B.R. Caldwell)



Mr. W.C. Steele (photo courtesy of B.R. Caldwell)

Mr. Steele, Lee's first Park Superintendent, started out at Lee working for the CCC as a Local Experienced Man or LEM. LEMs were older men with work skills that they taught to the younger CCC enrollees. One of the major skills Mr. Steele taught was well drilling.



Park patrons enjoying one of the artesian wells drilled by Mr. Steele and his crew of CCC enrollees. (photo courtesy of B.R. Caldwell)



CCC enrollees getting ready to work.
(photo courtesy of B.R. Caldwell)

1938: The CCC stayed busy making shingles, working on the lake dam and the Loop Road down by the river, building the park's stone entrance gates, an elevated outhouse, another picnic shelter and a barn for the park superintendent.



Stone entrance gates built by the CCC.



The "Bird House", an elevated outhouse, built by the CCC along the Lynches River.

The CCC built the Loop Road down in the floodplain of the Lynches River. When the river flooded, it helped to settle the sand and clay that the CCC put down to finish the road.



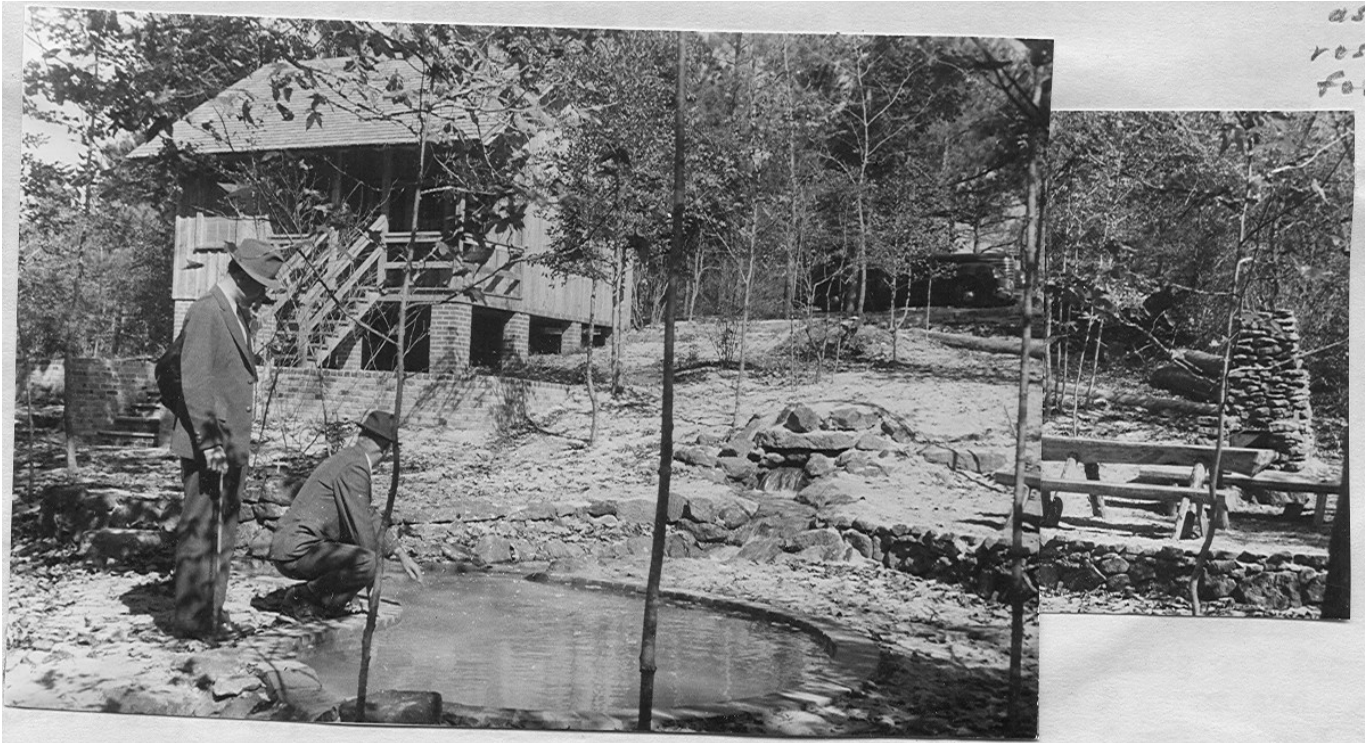
The Loop Road during a flood
(photo courtesy of B.R. Caldwell)



This shelter was built using timber from the park. The enrollees also made the cypress shingles.
(photo courtesy of B.R. Caldwell)

1939: By 1939, the CCC was almost finished building the park. One of the last structures to be built was Cabin #4. Cabins 1-3 were built during 1937-8 and were torn down in the late 1960s due to deterioration.

Cabin #4 is still standing today where it was built down on Brown's Lake in the primitive youth group camping area.



**Cabin #4, an artesian well and wading pool and a stone stove
being inspected by the CCC supervisors in 1940.**

(photo courtesy of National Archives, Atlanta, Georgia)

**Do you have a family member that was
in the CCC in South Carolina?**

Maybe your Father or Uncle or Grandfather was in the CCC?

We want to hear from you!

**Contact one of the Park Rangers for more information
or call the park's education office (803) 428-4988**